

WA Shipwrecks Museum

Past and Present

Self-Guided Museum Exploration

Adult Helper Instructions

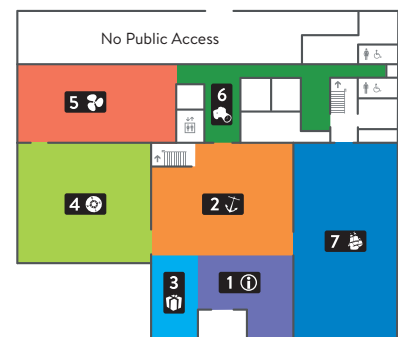
- Read all the pages aloud
- Show students the pictures
- Help them find the objects
- Take photos of what you see
- Complete the pages in any order
- It is okay if you can't answer all the questions

Today we are going to learn about two things:

1. The **history** of this **building** and the **clues** from the past left behind.
2. How are objects **from the past** the **same** and how are they **different** to things **from the present**.



Ground Level



Level 1



Map Key

Ground Level:

1. Information Desk
- 2. Entrance Gallery**
3. Museum Shop
- 4. Hartog to de Vlamingh Gallery**
- 5. Xantho Gallery**
6. Corridor Displays
- 7. Batavia Gallery**

Level 1:

8. Batavia Observation Deck
- 9. Dutch Wrecks Gallery**



WA Shipwrecks Museum

Outside – Front Entrance

Find these plaques on the outside wall.

In what year did the Museum open?

This building was not always a Museum.

This building was built by convicts (prisoners) around 170 years ago.

Find a 'convict arrow' on one of the window bars.

(Hint: It is on the window that is NOT next to the plaques)

Rub a limestone brick with your fingers.

A convict builder held this brick in the past!
You are touching a piece of history!





Outside the Museum

Look up and find a big hook.

This was once used to lift things up to the second floor.

In the past, this building was used to store things like food, clothes and tools.

The space under the hook used to be a door. Why do you think it has been filled in?

Sometimes buildings are changed over time.



Find the *Eglinton's* anchor.

In 1852, an English ship called the *Eglinton* was bringing supplies to Fremantle.

Feel the metal parts of this anchor.

Old things look and feel different to new things.





WA Shipwrecks Museum

Entry Gallery Ground Level

2

Find the display in the far, right corner called *A ship with two tales*.

Find objects that you might have at home.

How are the objects from the past different to ones from the present?

How are they the same?

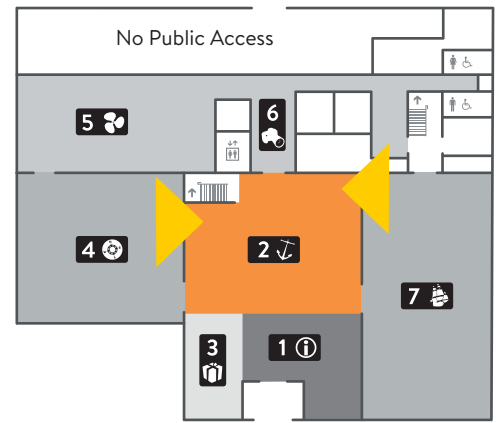
Find the Eglinton display next to the staircase.

How are the objects from the past different to ones from the present?

How are they the same?

You will learn more about the *Eglinton* shipwreck today.

Ground Level





Hartog to De Vlamingh Gallery Ground Level 4

Touch the old wooden blocks on the floor.

They are smooth after thousands of feet walking on them over time.

How are these old blocks different to a new wooden floor?

How are they the same?

Find some old maps and tools that were used by sailors to find their way.

How are the maps and tools from the past different to new ones?

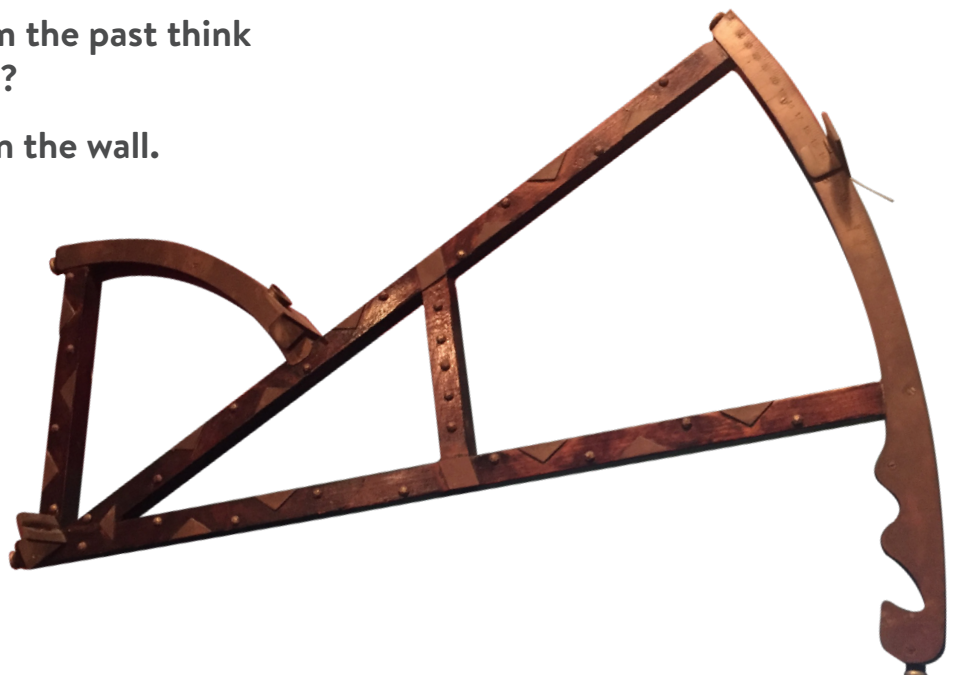
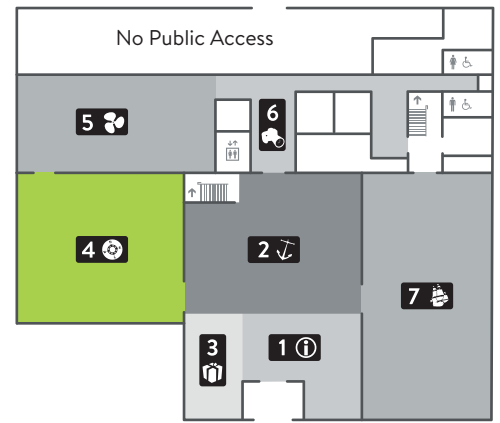
How are they the same?

Does your adult helper have a map or a compass on their phone?

What would a sailor from the past think about a map on a phone?

**This navigation tool is on the wall.
Can you find it?**

Ground Level





WA Shipwrecks Museum

Batavia Gallery Ground Level

7

Find part of a BIG shipwreck.

The ship was called *Batavia*.

Find the model ship.

How is it different to ships we see today?

Peer into this cannon.



Find some things that were put inside a cannon.

Do you think ships from the present still use cannons?

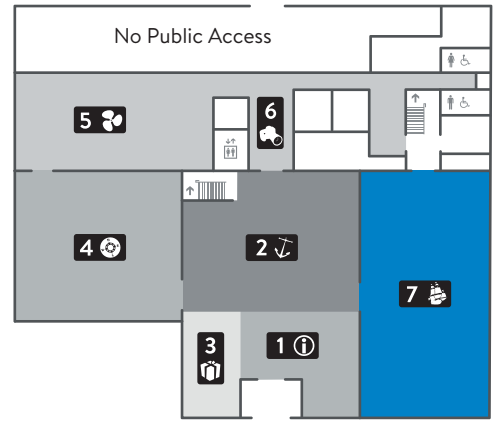
Find the bricks on the floor.

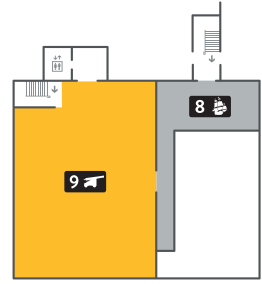
These bricks are hundreds of years old.

How are the bricks from the past different to bricks from the present?

How are they the same?

Ground Level





Dutch Wrecks Gallery Level 1

9

Find the things in these pictures below.

Look hard – some are hiding quite well!

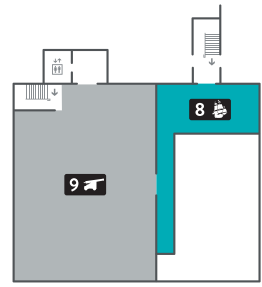
These objects are all from shipwrecks.

They are over 300 years old.

How are these objects from the past different to objects from the present that do the same job?

How are they the same?





Batavia Viewing Gallery Observation Deck Level 1

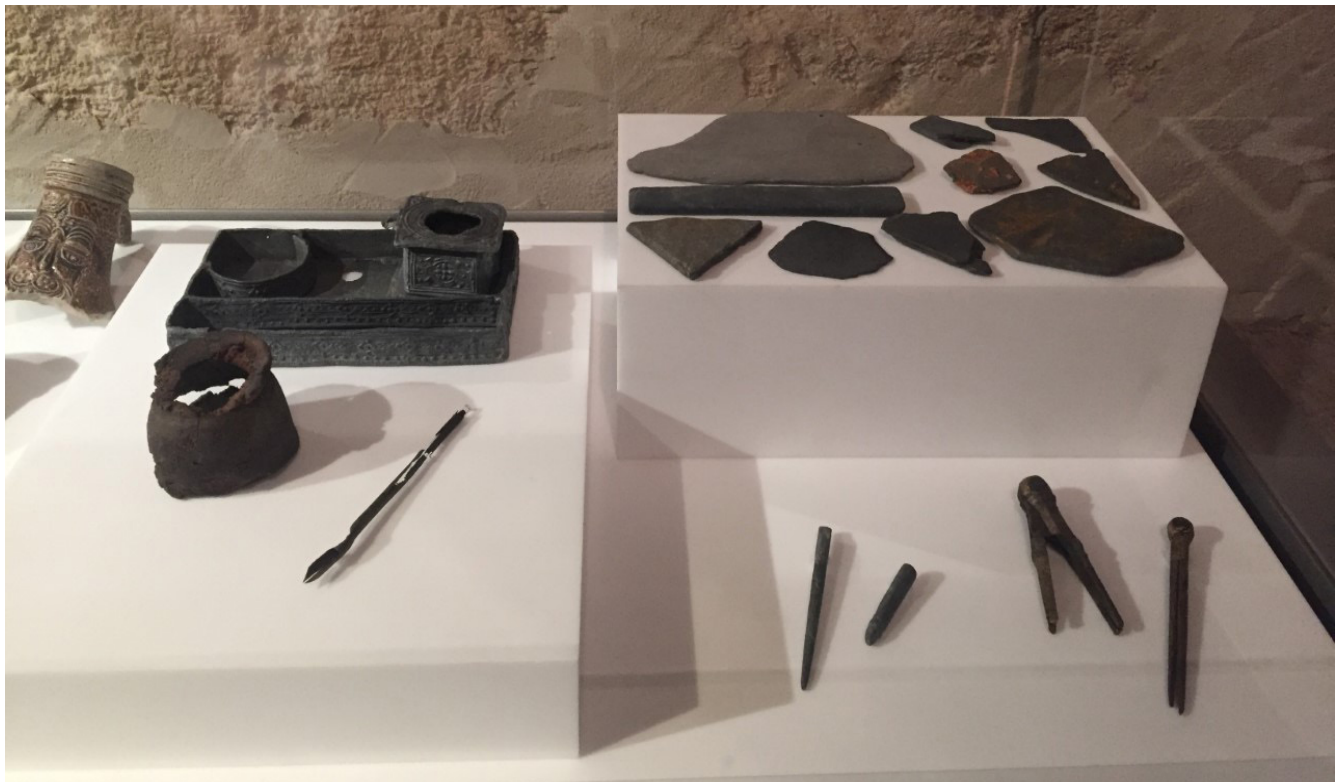
8

Find the Captain's Cabin and sit inside.

Imagine you are on a ship, 400 years ago.

What might have been used to light up this cabin at night?

Find these objects nearby.



The captain would have written things using objects like these.

How are writing tools from the past different to writing tools from the present?

How are they the same?