

WOODSIDE LEARNING STUDIOS

WA MUSEUM BOOLA BARDIP





VENUE HIRE

Woodside Learning Studios at WA Museum Boola Bardip are managed by the Venues Catering Partner Heyder & Shears. Heyder & Shears provide event management services, including venue booking, catering requirements, and AV requirements.

To enquire about catering within other spaces of the museum please contact Heyder & Shears catering directly info@heydershears.com.au 9221 4110

CATERING

Heyder & Shears Exclusive Caterers operate the cafe onsite - Epoch. H&S offer a diverse array of menu options to suit every event, taste, style and requirement.

EPOCH Our primary focus is always on using the freshest locally sourced ingredients.



[@heyderandshearscatering](https://www.instagram.com/heyderandshearscatering)
[@epochcafe](https://www.instagram.com/epochcafe)



www.heydershears.com.au
www.epochperth.com.au

PACKAGE COSTINGS

HALF DAY - \$65 PER PERSON + VENUE HIRE

FULL DAY - \$75 PER PERSON + VENUE HIRE

Package includes catering, setup, cleaning, room refresh between breaks. Venue hire is a one off fee per below table. (packages for minimum 20 guests)

Room rates and inclusions

4 hours - Half Day = MT and Lunch / Lunch and AT

8 hours - Full day = MT, Lunch, AT

Room rates during Museum opening hours | 9:30am - 5pm

Studio Room 1 | Half Day | Full Day

(Capacity 40 guests)	\$300	\$500
----------------------	-------	-------

Studio Room 2 | Half Day | Full Day

(Capacity 20 guests)	\$300	\$500
----------------------	-------	-------

Studio Room 3 | Half Day | Full Day

(Capacity 40 guests)	\$300	\$500
----------------------	-------	-------

Studio 2 & 3 | Half Day | Full Day

(Capacity 60 guests)	\$500	\$750
----------------------	-------	-------

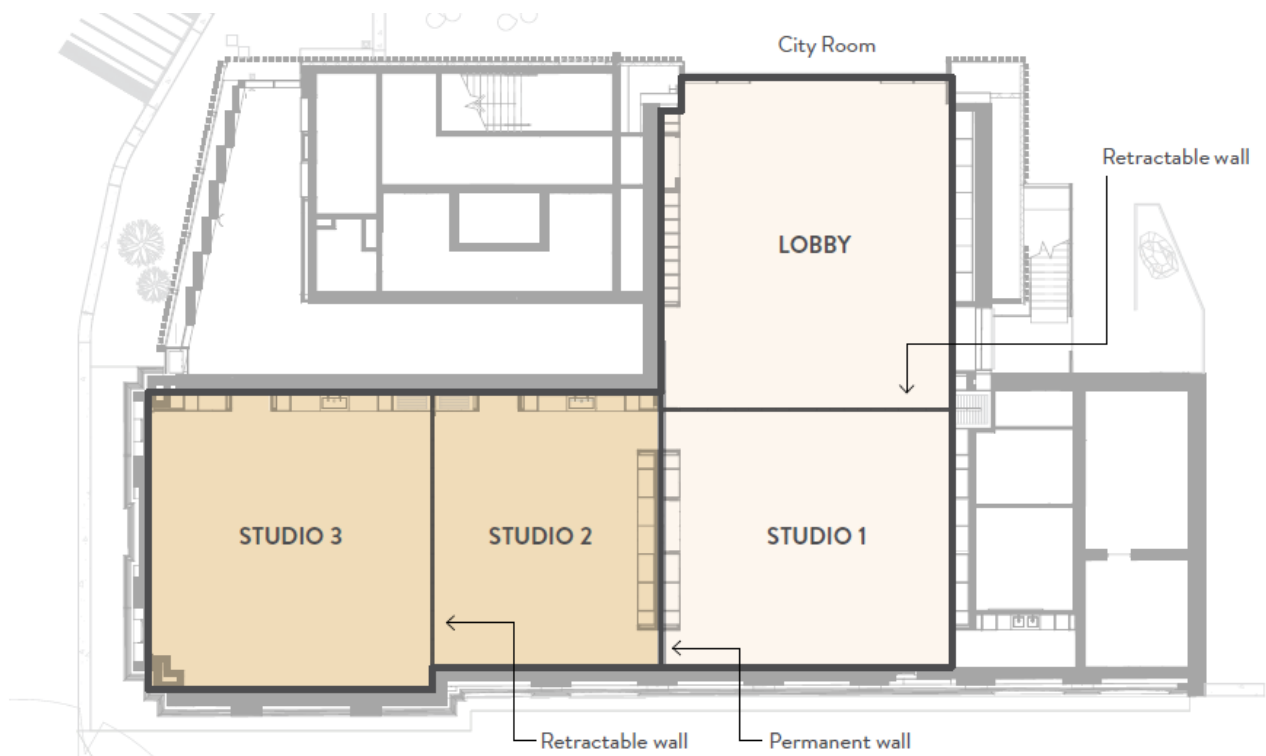
Inclusions: Trestle Tables, chairs, basic AV, projector, television

ROOM LAYOUT

Our team can configure the studios to your preferred setup - please advise your requirements during the booking process.

Room Layout Options

- Class Room Style
 - 4-6 chairs per table, recommended for group activities
- Theatre Style
 - Placing tables to perimeter of room, all chairs in rows facing projector or screen
- Cabaret Style
 - Open facing tables, maximum of 4 chairs around each table facing projector or screen
- Boardroom style
 - Tables combined into long table format, with guests all seated around per large board table.



CATERING MENU

Menu available for delivery to Woodside Learning Studios

Please advise your catering choices during the booking process.

BEVERAGES

Nespresso Pod Coffee & Elmstock Tea Bags - available for the duration of your booking.

Harvey Fresh Orange Juice - On Arrival

Jugs of Water - refreshed throughout the day

Mints

Additions:

Water Cans (\$3)

Coffee Vouchers for Epoch (\$3) - to replace Nespresso machine

MORNING/ AFTERNOON TEA

(Select any combination of 2 items)

Sweet

Mary Street Almond Croissant

Sweet Danish

Mini Sweet Muffin

Banana Bread

Savoury

Feta & Warrigal Greens Savoury Mary Street Danish

Mini Sausage Rolls

Mini Savoury Muffin

LUNCH

Assorted Baguettes & Wraps

Meat Based / Vegetarian

plated on share platter

Shared Chef Selection Salad

Whole Assorted Fruit bowl

VOUCHERS

If you would prefer your guests choose their own food or drinks, but want to pick up the bill, we can issue \$5, \$10 or \$20 pre-paid vouchers, redeemable at Epoch Cafe. These will be passed onto the contact person on the day of your event.



EPOCH



www.epochperth.com.au



[@epochcafe](https://www.instagram.com/epochcafe)



info@heydershears.com.au

EPOCH CAFÉ

OPERATED BY HEYDER & SHEARS CATERING