

LET'S **C** FREO!

Exploring Change, Culture,
Celebration and Commemoration



Fremantle Jetty, Bathers Beach, ca. 1870

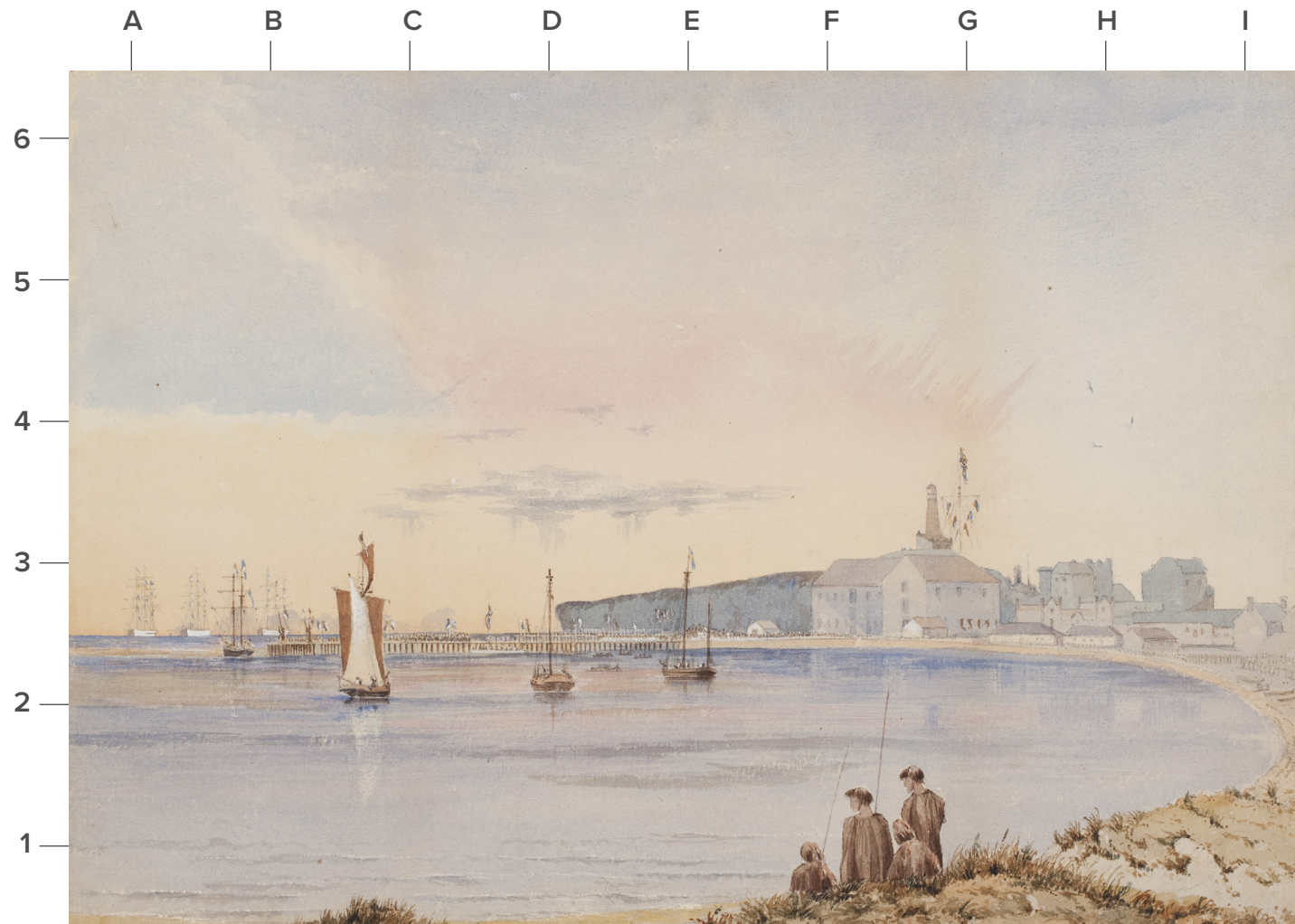
State Library of Western Australia
009279D

WA Shipwrecks Museum

Student Picture Book

Shipwrecks Museum

Outside



View Of Fremantle, ca. 1869

State Art Collection,
Art Gallery of Western Australia

Shipwrecks Museum

Outside

CULTURE



Convict Uniform
Western Australian Museum

Shipwrecks Museum

Outside



Maritime Museum, Cliff Street,
Fremantle ca. 1979

State Library of Western Australia
b3133259

Shipwrecks Museum

Outside

CELEBRATION



Maritime Museum, Cliff Street, Fremantle ca. 1993

State Library of Western Australia

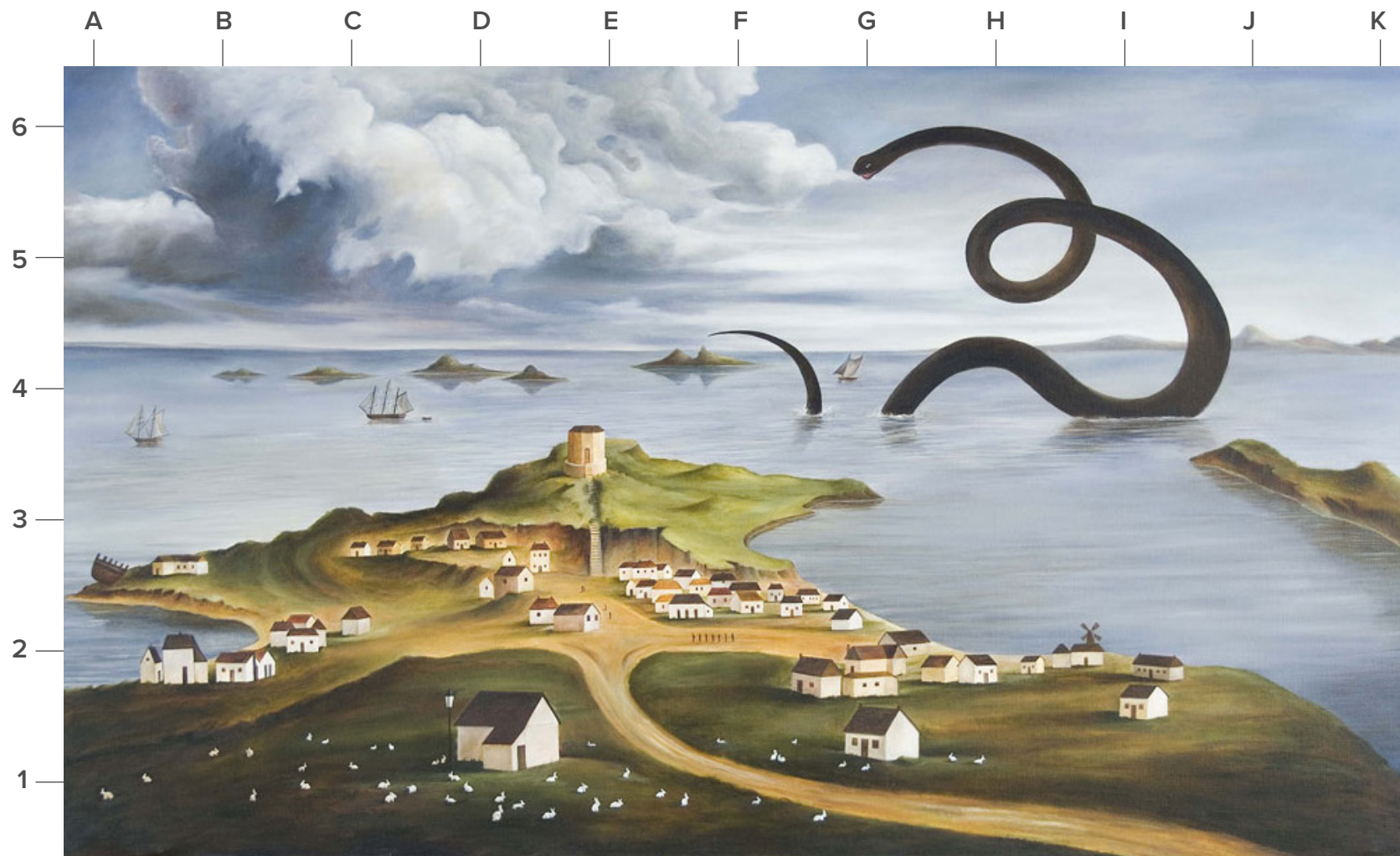
Christopher Pease, *The Roundhouse*

Image courtesy of Gallerysmith and the artist.



Kidogo Arthouse

City Of Fremantle History Centre
E000130



One Day In Fremantle, Bather's Beach, 2019

Freo's View: freoview.wordpress.com



Blessing Of The Fleet Parade, 1990

State Library of Western Australia by permission of Roger Garwood
b4812411_12

Fishing Boat Harbour



Cicerello's Fish Markets, 1984

State Library of Western Australia
b3699271_1

Fishing Boat Harbour

CELEBRATION



America's Cup Spectators, 1987

State Library of Western Australia
215709PD

Fishing Boat Harbour



Highway To Hell Parade, 2020

Freo's View: freoview.wordpress.com

Esplanade Park

CHANGE



A Crowd On The Esplanade, Fremantle, ca. 1905

State Library of Western Australia b2537314_1



Maitland Brown Memorial, Fremantle, 1920s

State Library of Western Australia
007095D

Esplanade Park

CELEBRATION



May Day Procession, Fremantle, 1964

State Library of Western Australia
b3823511_1



Perth International Street Arts Festival, 2017 and 2019

[Freo's View: freoview.wordpress.com](http://freoview.wordpress.com)

Object Bingo

Find each of these objects in the Shipwrecks Museum and find the answers to each question.



Which soft drink company used this bottle?



What were you doing if you wore this?



What did this device from the past measure?



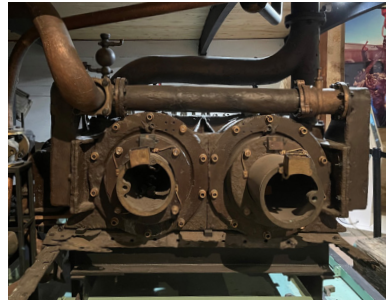
What was this historical comb used for?



Who left this commemorative plate?



This native animal had which island named after it?



This once journeyed through Fremantle waters. What is it?



Which group of people created this rock art?



Which English explorer found this?



Did this ship ever come to Fremantle?



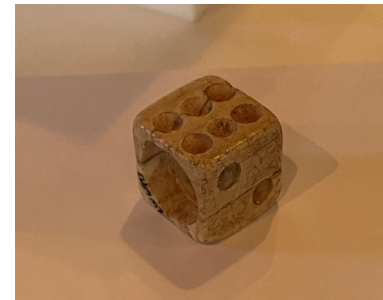
What was this olden-days implement used for?



What object is this the remains of?



How have scissors changed over time?



What was this dice made from?



Can you read the date on any coins?



WA
SHIPWRECKS
MUSEUM