

# EDUCATION 2023



WA MUSEUM  
BOOLA  
BARDIP



## Education at WA Museum Boola Bardip 2023

**WA Museum Boola Bardip is a place of many stories waiting to be shared with you and your students.**

Come and immerse yourself in our world class exhibition spaces designed to engage enquiring minds in all things Western Australian.

Our award-winning facilitated programs have clear links to the Australian and Western Australian curriculum with a strong emphasis on Aboriginal and Torres Strait Islander Histories and Cultures, STEM and Sustainability and Creativity, Innovation and Entrepreneurship.

The unique Museum environment provides learning opportunities for all students from pre-primary through to year 12 that enhance and support classroom learning.

As the oldest scientific institution in the state, we continue to be at the forefront of discovery, recording and researching the state's unique natural environments and cultural heritage. Our experienced team of educators bring this content to life in fascinating ways and provide the context for real world learning.

We are particularly proud to have won the prestigious National Museums Industry award in 2022. We were recognized for exploring layered perspectives of current and historical issues and the depth of consultation undertaken to create our learning programs.

The Museum also offers self-guided visits with educator-designed materials for students of all year levels, virtual labs for those who cannot visit the Museum, as well as temporary exhibition and event programs for schools and professional learning opportunities for teachers.

### **BOOK ONLINE**

[visit.museum.wa.gov.au/boolabardip/all-education-programs](https://visit.museum.wa.gov.au/boolabardip/all-education-programs)

# New in 2023

We are expanding our already comprehensive facilitated suite of programs to include *Debating Ancient Histories: Egypt* and *Introducing Robots*.

---

We introduce three new virtual lab education programs including *First Contacts*, *Science and Sustainability* and *On the Homefront* to reach those who cannot visit the Museum in person.

---

We present unique opportunities for schools to visit our exciting temporary exhibitions including:

- *Wonderland* – a celebration of Lewis Carroll's timeless stories and Alice's adventures on film;
- *Discovering Ancient Egypt* – an amazing exhibition of 200 objects showcasing the life of the ancient Egyptians;
- *Wild About Babies* – the display of 20 life-sized endangered baby animal sculptures that build awareness of vulnerable species and;
- *Bush Mechanics & Cleverman* – two popular ABC TV series providing a broader insight into Aboriginal life.

We are thrilled to host the education offering for the inaugural Perth Design Week in March, giving you the opportunity to delve into the world of architecture and design.

---

We are now introducing options to book multiple workshops at a time and bring your whole school to the Museum at once.

---

We are offering familiarisation, teacher planning and Group Professional Learning days throughout the year and on a request basis.

---

Finally, we are encouraging everyone to join our new Facebook group, **WA Museum Boola Bardip Teachers & Educators Network**, to keep up to date with our education programs, offerings and opportunities.



**We recognise and respect the  
Traditional Owners of this Country  
and their connection to the lands,  
waters and skies.**

# Facilitated Education Workshops

Our facilitated workshops are “highly inclusive, well-researched and interesting” and the best way to experience the Museum with your class, no matter what year level you teach.

All 15 facilitated workshops are led by the Museum’s experienced Learning & Engagement team and have been curated using the Museum’s unique resources to provide a deeper learning experience in our specialist subject areas. Our workshops cover cross curriculum priorities and fall within three broad learning areas; Connection to Country, Sustainability, climate change and the natural world and Innovation and Entrepreneurship. Within these learning areas you’ll find a selection of workshops tailored to your student’s year level, linking closely to curriculum.

**“It was very engaging, providing the students a lot of first hand information they wouldn’t have received from just a self guided tour. Definitely will be doing this again.”**

- Christine, Wembley Downs PS

## COST

\$280 per group with up to 32 students

---

## TIMES

Weekdays during school term  
at 10am and 12.30pm

---

## DURATION

60 – 90 minutes

---

## BOOK

Online

---

## GENERAL ADMISSION

With a facilitated workshop booking, General Admission to the Museum is included for students and teachers to a ratio of one adult to six students. Any additional adults will be required to pay admission.







# Connection to Country

Explore the knowledge, histories  
and cultures of Western  
Australia's First Peoples.

## Sharing Stories

**Year PP – 3 | Aboriginal and Torres Strait  
Islander Histories and Cultures | Science  
Humanities and Social Sciences**

*Dreaming Stories | Stars, Planets, Universe  
Nyoongar Language*

Learn about the creation of the natural land, stars, planets and universe through deep knowledge derived from Nyoongar oral histories of the Nyitting (Dreaming). Students will be immersed through story, movement and access to real artifact objects developed in consultation with the Traditional Owners from across WA.

## Cultural Collisions

**Year 4 – 6 | History | Aboriginal and  
Torres Strait Islander Histories and  
Cultures | Intercultural Understanding**

*Pre-colonial | Colonial Relationships*

Gain an understanding of the early encounters and collisions of culture between the Aboriginal peoples of Western Australia and visitors since 1616. Students will explore the evidence of these diverse relationships and examine their cultural, social, and economic consequences through artworks and objects from the Museum's collections.

## Managing Country

**Year 7 – 9 | Aboriginal and Torres Strait Islander Histories and Cultures | HASS | Sustainability**

*Aboriginal ways to Manage Country  
Connection to Country*

Find out how Aboriginal peoples have intentionally managed Country to create regrowth and replenishment. Students will explore the multifaceted way Aboriginal peoples engineer our Country including food sources, shelter, caring for the lands and farming through case studies and stories in the Museum's collection.

## Debating Ancient History

**Year 7 – 12 | Aboriginal and Torres Strait Islander Histories and Cultures Humanities and Social Sciences | Critical and Creative Thinking**

*Archaeology | Ethical Concerns  
Traditional Owners*

Explore the role of the archaeologist and critically examine ethical concerns associated with the treatment, display and interpretation of collections in cultural institutions. Students will unpack multiple perspectives on Australia's ancient history, using real and replica objects and artefacts.

## Investigating Rights and Freedoms

**Year 10 – 12 | Aboriginal and Torres Strait Islander Histories and Cultures | Ethical and Intercultural Understanding | Humanities and Social Sciences**

*Human Rights | Civics and Citizenship  
Aboriginal Equal Rights and Recognition*

Focus on the principles of human rights in Aboriginal and Torres Strait Islander peoples' struggle for equal rights, recognition and self determination. Using an inquiry approach, and drawing on artefacts, objects, oral histories and digital content, students investigate first-person accounts and case studies of resistance, protest, and triumph to form an opinion on whether Aboriginal and Torres Strait Islander peoples are afforded the same rights as other Australians.





# Sustainability, climate change and the natural world

A large, glowing meteor streaks diagonally across the upper half of the image against a dark, starry space background. Below the meteor, a view of Earth from space shows a vast expanse of white clouds over a blue ocean, with a sliver of green land visible in the bottom left corner.

Share in the wonders of  
our natural world, from the  
classification of plants and animals  
to the mysteries of the galaxy.

## Dinosaurs Don't Roar

**Year PP – 3 | Science | Science Inquiry Skills  
Science Understanding | Palaeontology**

*Fossils | Pre-historic World*

*Broome Dinosaur Trackways*

Hunt for the tracks and traces of Western Australia's dinosaur past and learn about our prehistoric history. Students will join "Dr Bones" to discover how sedimentation has created fossil remnants of dinosaurs, and handle real and replica fossils from the Museum's collections.

## Marvellous Meteorites

**Year 1 – 4 | Science | Science Understanding**

*Meteorites | Impact Craters | Cosmic Events*

Explore the origins of meteorites and the connection between cosmic events and the impact they have made on Earth. Using examples from the Museum's world class meteorite collection, students will discover what meteorites are, where they come from and why they are important to science.

## Classified Information: Understanding our world

**Year 3 – 4 | Science | Science Inquiry Skills  
Science Understanding | Biodiversity**

*Living and Non-living Things  
Classification Quandary*

Delve into the work of the Museum's scientists and the techniques they use to classify living and non-living things. Students will undertake a number of practical, hands-on activities to help them understand the importance of classification and the field of taxonomy.

## Adaptations

**Year 4 – 6 | Science | Science Inquiry Skills  
Science Understanding | Science as a  
Human Endeavour**

*Structural Features | Survival  
Physical Adaptations | Life Cycles  
Climate Change | Habitats*

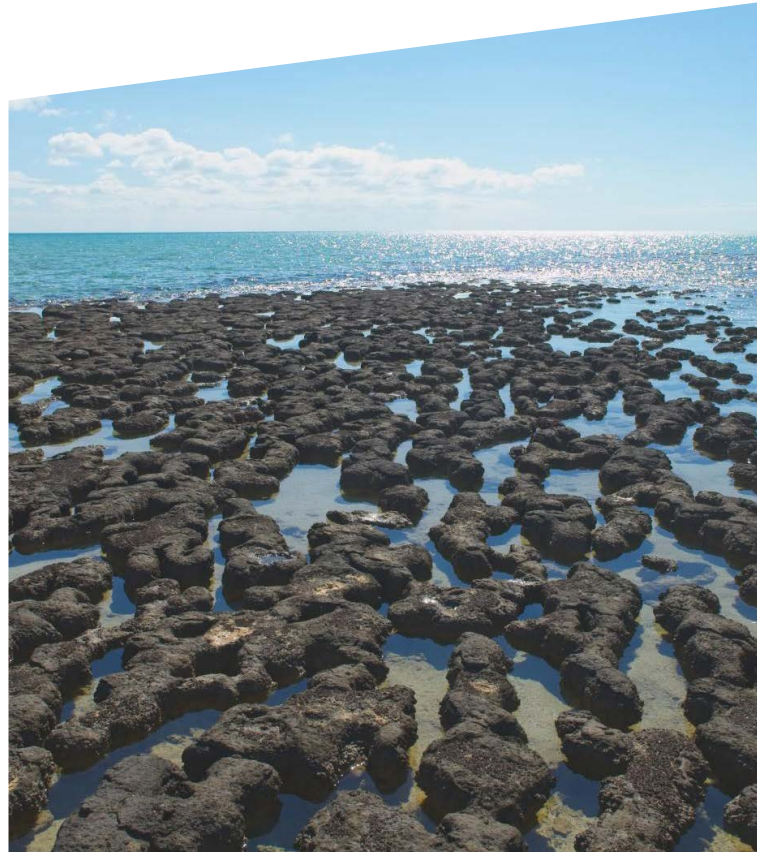
Discover how living things adapt to changing environments with a focus on either birds or marine life. Focusing on birds, students will examine the way living things adapt to their environment and the changes that allow species to thrive and survive. Focusing on Marine Life, students will explore ocean creatures, their unusual adaptations and life cycles and investigate their ability to survive in a changing environment.

## Early Earth: A dynamic and changing place

**Year 4 – 6 | Science | Science  
Understanding | Environment**

*Archean Earth | Cyanobacteria*

Travel back billions of years and discover how microscopic organisms changed the conditions for life on Earth forever. Students will investigate the structures they formed, the chemical processes they used and the iron rich deposits they helped create providing a wealth of mineral resources supporting the Western Australian economy today.





## **Analysing the Evidence: Impacts on Urban Wildlife**

**Year 5 – 7 | Science | Science Inquiry Skills  
Science understanding | Sustainability  
Environment | Biodiversity**

*Wildlife | Real World Solutions*

Explore how our urban environments are constantly undergoing physical change, making conditions for local wildlife somewhat unpredictable. Students will take on the role of an ecologist and explore some of the changes brought about as the landscape becomes fragmented and modified.

## **Taxonomy: Skills for organising a complex world**

**Year 7 | Science | Science Inquiry  
Skills | Science Understanding**

*Classification | DNA Analysis  
Binomial Nomenclature*

Understand the science behind the naming conventions used by scientists. Using practical, hands-on activities, students apply the techniques and scientific language of the taxonomist as they delve into the intriguing world of taxonomy, including a foray into the world of the Linnaean system of binomial nomenclature.

## **War in WA: Stories from the Homefront**

**Year 9 – 10 | Humanities and Social  
Sciences | WA History | Historical Skills**

*WWI & WWII | Social Change  
Women | Government Controls*

Explore how the World Wars impacted those at home through object and source analysis of the Museum's extensive collection. Students will focus on industry, the role of women and the social and economic changes that occurred in response to the First and Second World Wars.



# Innovation and entrepreneurship



**Learn how design techniques and creative thinking can solve real-world problems.**

## Introducing Robotics

### **Year 4 – 6 | Digital Technologies**

*EV3 Lego Mindstorm Robot  
Coding | Problem Solving*

Discover the world of robotics; from driverless buses to autonomous farming vehicles to interstellar travellers and Mars rovers. Students will find out what makes a robot, how robots work and be challenged with coding and testing an EV3 Lego Mindstorm robot.

## Creative Entrepreneurs

### **Year 7 – 10 | Humanities and Social Sciences Critical and Creative Thinking | Technologies**

*Business Opportunity | Business  
Plan | Elevator Pitch*

Using case studies of West Australian creative innovations, explore how entrepreneurs solve real world problems through creativity. Working as a team, students will apply a design thinking approach to transforming their own idea into a business.

## Temporary Exhibitions & Special Events

Throughout the year the Museum hosts a series of international and national travelling exhibitions giving you and your class the opportunity to experience something unique and be inspired. The Museum also participates in key national educational initiatives to provide extra opportunities for you to discover more about WA.

### **COST**

Varies depending on exhibition from free of charge to \$280.

---

### **TIMES**

Limited time during exhibition dates only

---

### **DURATION**

Varies

---

### **BOOK**

Online

---

### **GENERAL ADMISSION**

If you are part of an Education visit, students gain free General Admission entry to the Museum. Teachers also gain free General Admission entry to the Museum at a 1:6 teacher to student ratio. Additional adults are required to pay the General Admission fee.





## Wonderland

16 DEC 2022 – 23 APR 2023

**Year PP – 12 | Media Arts | English**

*Alice in Wonderland | Film | Literature*

Curiouser and curiouser! Imagine a world where nothing is impossible. Come with Alice on an adventure into *Wonderland* – an interactive exhibition that celebrates Lewis Carroll's timeless stories and Alice's adventures on film. Visit the exhibition and book an optional intro talk for your class to highlight the themes and experiences, as well as looking at the history of Alice through film.

## Perth Design Week

23 – 29 MAR 2023

**Year 5 – 8 | Design | Technology**

*Entrepreneurs | Designers*

The inaugural Perth Design Week will be launched in 2023 and celebrates design in its broad array of disciplines with focus on experimentation, innovation and ideas that enrich the world. Join this full day workshop that will explore design thinking, innovation within the museum and culminate in a design for the future challenge where students will design something of their own.

## Wild About Babies

1 MAY – 31 AUG 2023

**Year PP – 12 | Humanities and Social Sciences | Science**

*Endangered Species*

Designed by artists Gillie and Marc, *Wild About Babies* is a celebration of the incredible diversity of the animal kingdom, building awareness of vulnerable species through the display of 20 life-sized endangered baby animal sculptures. View the sculptures on a self-guided exploration before exploring in gallery some of Western Australia's threatened Wild Babies.



## Discovering Ancient Egypt

10 JUN - 8 OCT 2023

**Year PP – 12 | History | Ethical and Intercultural Understanding**

*Ancient Egypt*

*Egypt, Land of Discoveries* is an amazing exhibition of 200 objects, showcasing lifestyles of the ancient Egyptians. Visit the incredible temporary exhibition, linked strongly to Year 7 History and book an intro talk for your class to discover the themes, content and highlights of the exhibition with an inquiry activity for students to complete.

## Debating Ancient History - Egypt

**Year 7 | Humanities and Social Sciences | History**

*Archaeology | Ethical Concerns*

Available during the exhibition dates only, join this facilitated workshop to learn about the role of the archaeologist, unpack multiple perspectives on Egypt's ancient history, and examine ethical concerns facing collecting in cultural institutions.

## National Science Week

12 – 20 AUG 2023

**Year 4 – 12 | Science**

National Science Week is Australia's annual celebration of science and technology. Join WA Museum Boola Bardip online during

Science Week to hear directly from the museums scientists and researchers and delve deeper into the 2023 theme with additional activities for the classroom.

## Bush Mechanics & Cleverman

18 NOV 2023 - 4 FEB 2024

**Year PP – 12 | Aboriginal and Torres Strait Islander Histories and Cultures | Science**

*Mechanics | Origin Stories | Multi Media*

Get behind the scenes of two popular ABC TV series; *Bush Mechanics & Cleverman* providing a broader insight into Aboriginal life. *Bush Mechanics* showcases the ingenuity of outback mechanics whose resourcefulness can turn branches, spinifex and sand into tools and spare parts to get cars back on the road. *Cleverman* explores a series of Aboriginal origin stories in a contemporary superheroic and comic art context, with political nuance touching on themes of class, racism and power. Visit the exhibitions and book an optional intro talk for your class to delve further into the creating of the series.



## Self-guided experiences

Explore at your own pace with a free self-guided experience. Access bespoke resources that lead students on a journey of discovery through the Museum.

### COST

\$0 - \$10. If you are part of a self-guided Education visit, students gain free General Admission entry to the Museum. Teachers also gain free General Admission entry to the Museum at a 1:6 teacher to student ratio. Additional adults are required to pay the General Admission fee.

---

### TIMES

Weekdays, every half hour between 9.30am – 4.30pm

---

### DURATION

You set the pace.

---

### BOOK

Online





## SELF-GUIDED RESOURCES

Use one of our educator created self-guided resources during your visit.

---

### Connecting Trail

**Year 3 – 6 | HASS | Science**

*Fossils | First Contacts*

### Diversity Trail

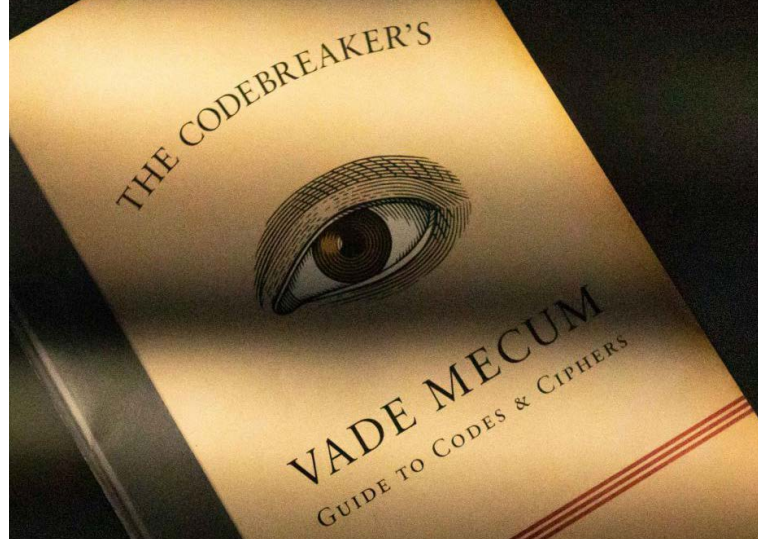
**Year 6 – 8 | HASS | Science**

*Biodiversity | Adaptions | Farming*

### Movement & Change Trail

**Year 7 – 10 | HASS | Science**

*Environmental and Social Change  
Forests | Migration*



### Codebreakers

**Year 4 – 9 | Digital Technologies**

*Mystery Agent | Codes | Orienteering*

Part scavenger hunt, part escape room, Codebreakers is a series of challenging puzzles, codes and clues leading you across galleries and through the Museum. Hire a codebreakers kit and allow students to explore and work in teams to identify the secret agent intent on raiding the Museum's collection!

### Gogo digital guide

**Year 9 – 12**

*Oral Histories | Interviews  
Community Voices | Audio Guide*

Use Gogo to go your own way around the Museum, accessing extra content and the many stories of WA. Download the app for free or hire a device when you arrive.



## Virtual Labs

Virtual Labs are Boola Bardip's virtual education programs, which are delivered by our experienced educators and exclusively developed for online learning, with highly interactive, curriculum linked activities to engage students virtually.

### **COST**

\$90 - \$120

---

### **TIMES**

Wednesday & Fridays, 9.30am, 11am & 1pm

---

### **DURATION**

1 hour

---

### **BOOK**

Online



## VIRTUAL WORKSHOPS

This is a live, interactive session with a Boola Bardip educator and includes activities for students to complete during the session that can be utilised by teachers afterwards.

---

### First Contacts

**Year 4 – 6 | History | Aboriginal and Torres Strait Islander Histories and Cultures**

*Pre-colonial | Colonial Relationships*

Discover stories of first contact based on objects found in the Museum's collection. Students hear three stories of first contact from around Western Australia, considering the history and impacts of each of these encounters and participate in discussions and interactive activities related to the first contact stories.

### Science and Sustainability

**Year 4 – 6 | Science as a Human Endeavour | Sustainability**

*Campaign | Environmental Change  
Global Impact*

Explore case studies relating to our environment and find out how scientists and researchers apply scientific knowledge to uncover global changes and human impacts. Students will be introduced to the work of environmental campaigners, and be inspired

to develop their own ideas for change and how they can transform these ideas into a campaign to support sustainability.

## VIRTUAL WEBINARS

Webinars are a way for multiple classes and schools to access content at one time and are a live presentation utilising pre-recorded content that will support student learning on specific topics.

---

### On the Homefront

**Year 9 & 10 | Humanities and Social Sciences | History**

*WWI & WWII | Government Controls  
WA Stories*

With soldiers at the front, the Western Australian Homefront during the war has many stories of sacrifice, societal pressure, and change. Using objects found in the Museum's collection to tell personal stories from those in WA, students will hear about the experiences of those on the Homefront during the war.



# Professional Learning Programs

Increasing teachers' knowledge and confidence and providing tools and ideas they can apply to their own practice in the classroom.

"It was wonderful to be able to ask questions and have a discussion"

(Teaching Aboriginal Histories and Cultures across the curriculum)

## COST

\$15pp to \$90pp

---

## TIMES

Varies

---

## DURATION

Varies

---

## BOOK

Online

---

## GENERAL ADMISSION

General Admission fees apply when attending familiarizations. General Admission fees are included with Professional Learning bookings.



## PROFESSIONAL LEARNING

Our Professional Learning programs are hands-on and draw on the Museum's extensive collections and curriculum-linked education programs to examine how these themes can be addressed in the classroom.

---

### Introducing Aboriginal Histories and Cultures across the Curriculum

This program addresses a key knowledge gap for many educators, building their confidence in teaching complex aspects of Australian history and society.

### Exploring STEM and Sustainability in teaching

Exploring ways to empower students and educators to make sustainable choices for the planet through inquiry-based and hands-on learning.

### Using Digital Technologies in the Classroom

Professional learning program focusing on the integration of effective digital learning in the classroom including EV3 Lego Mindstorm robotic kits and Makey Makey.

### Group Professional Learning Days

Bring your staff group to the WA Museum for your next professional development day. Tailored half or full day experiences available.

## FAMILIARISATION

An introduction to the Museum, its exhibits and educational opportunities, providing clear links and resources to help you plan a visit with your class.

---

### Boola Bardip Familiarisation (Where do I start?)

Planning a visit to the WA Museum Boola Bardip and not sure where to start? Join us once a term for an introduction to and orientation of the WA Museum Boola Bardip site and education programs.

### Temporary Exhibition Familiarisations

Find out more about our latest exhibitions and how you can use these as learning opportunities for your class. Familiarisations will be a mix of virtual and in person and will take place near the beginning of the exhibition openings.

# Planning an excursion

The team at WA Museum Boola Bardip are here to help you plan excursions that help to meet curriculum objectives.

## Select programs that fit with your class syllabus

Choose from facilitated, self guided and virtual programs.

## Plan your visit

Download our Excursion Management Plan and Excursion Checklist for everything you need to plan your day at the Museum online.

Access the Excursion Map and certificate of currency.

Museum entry is now charged, however continues to be free for those 15 and under, for students 16 – 18 attending as part of an educational booking and for accompanying teachers to a ratio of one adult to six students. Any additional adults will be required to pay General Admission.



## BOOK ONLINE

[visit.museum.wa.gov.au/  
boolabardip/planning-excursion](https://visit.museum.wa.gov.au/boolabardip/planning-excursion)

---

You will be required to provide:

- Date
- Session time/s
- Program name/s
- School name and address
- Student year level
- Student number (max 32 per session)
- Lead teacher/individual's name, mobile number, and email
- Billing name, number, and email
- All accessibility needs for your visit



## Join the Teachers & Educators Network on Facebook

Connect with others and the Museums' education professionals  
[facebook.com/groups/wamuseumteachersandeducatorsnetwork](https://facebook.com/groups/wamuseumteachersandeducatorsnetwork)

---

## Subscribe to the Education newsletter

Receive reminders and program information by email - visit [museum.wa.gov.au/education-newsletter](https://www.museum.wa.gov.au/education-newsletter)

---

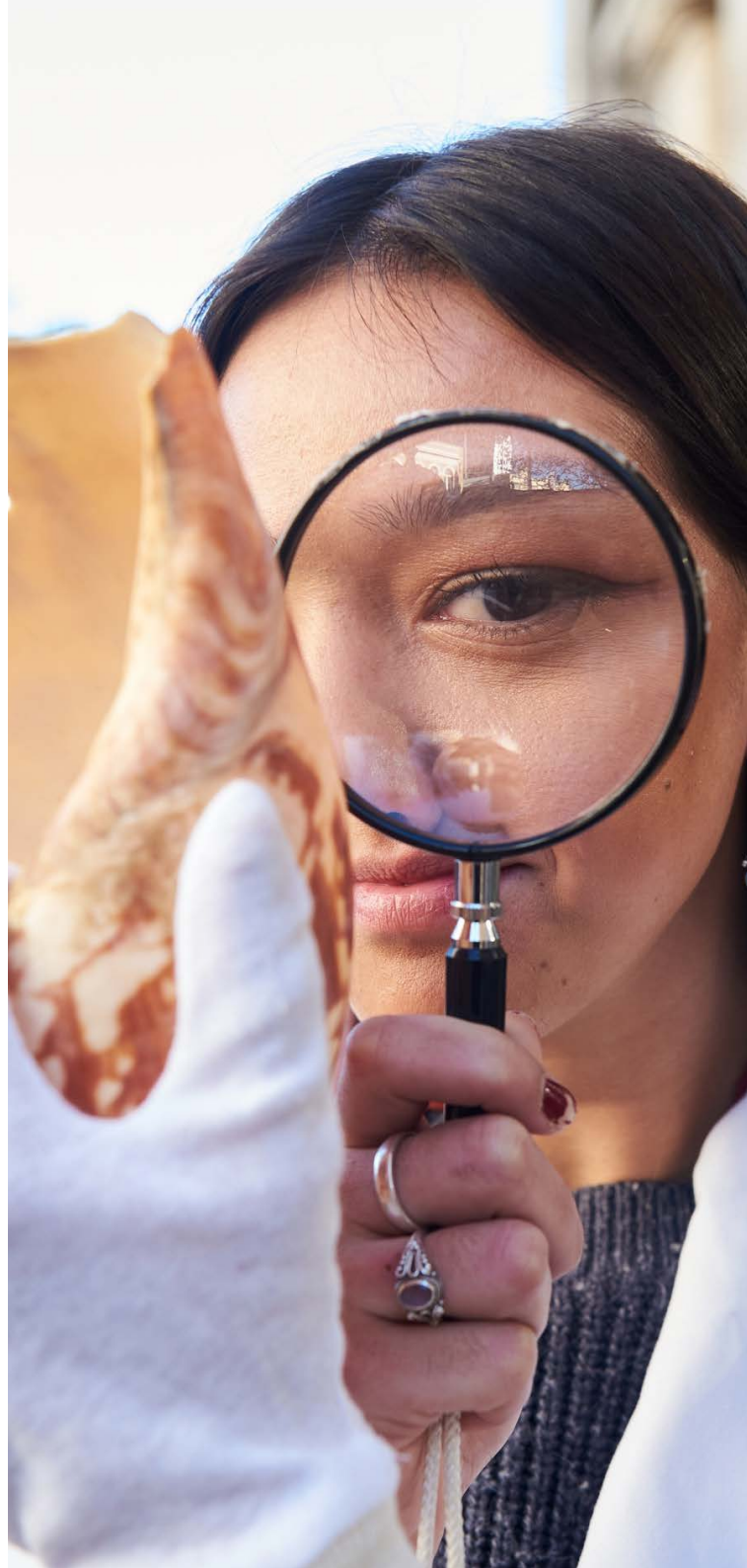
## Contact Us

1300 134 081  
[education@museum.wa.gov.au](mailto:education@museum.wa.gov.au)

---

## Tell us what you think

If you have visited WA Museum Boola Bardip or taken part in any of our programs submit feedback online.



# Quick guide to primary education at WA Museum Boola Bardip 2023

Discover Western Australia’s many stories; our people, our places and our role in the World through education programs with links to the Australian and Western Australian curriculum with a strong emphasis on Aboriginal and Torres Strait Islander Histories and Cultures, STEM and Sustainability and Creativity, Innovation and Entrepreneurship.

PROGRAM TYPE	PROGRAM NAME	CURRICULUM LINKS	PP	1	2	3	4	5	6
Facilitated Workshops - Connection to Country	Sharing Stories	Aboriginal and Torres Strait Islander Histories and Cultures	✓	✓	✓	✓			
	Cultural Collisions	History   Aboriginal and Torres Strait Islander Histories and Cultures					✓	✓	✓
Facilitated Workshops - Sustainability, climate change and the natural world	Dinosaurs Don't Roar!	Science	✓	✓	✓	✓			
	Marvelous Meteorites	Science		✓	✓	✓	✓		
	Classified Information	Science				✓	✓		
	Adaptations: Birds	Science					✓	✓	✓
	Adaptations: Ocean Life	Science					✓	✓	✓
	Analysing the Evidence	Science						✓	✓
	Early Earth	Science					✓	✓	✓
Facilitated Workshops - Innovation and Entrepreneurs	Introducing Robotics	Digital Technology					✓	✓	✓
Temporary Exhibitions & Special Events	Wonderland	Media Arts   English	✓	✓	✓	✓	✓	✓	✓
	Perth Design Week	Design   Technology						✓	✓
	Wild About Babies	Design   Technology	✓	✓	✓	✓	✓	✓	✓
	Discovering Ancient Egypt	History   Ethical and Intercultural Understanding	✓	✓	✓	✓	✓	✓	✓
	National Science Week	Science					✓	✓	✓
	Bush Mechanics & Cleverman	Aboriginal and Torres Strait Islander Histories and Cultures   Science	✓	✓	✓	✓	✓	✓	✓
Self Guided Trails	Connecting	HASS   Science				✓	✓	✓	✓
	Diversity	HASS   Science							✓
	Codebreakers	Problem Solving   Teamwork					✓	✓	✓
Virtual Labs	First Contacts	Aboriginal and Torres Strait Islander Histories and Cultures					✓	✓	✓
	Science & Sustainability	Science as a Human Endeavour   Sustainability					✓	✓	✓

# Quick guide to secondary education at WA Museum Boola Bardip 2023

Discover Western Australia’s many stories; our people, our places and our role in the World through education programs with links to the Australian and Western Australian curriculum with a strong emphasis on Aboriginal and Torres Strait Islander Histories and Cultures, STEM and Sustainability and Creativity, Innovation and Entrepreneurship.

PROGRAM TYPE	PROGRAM NAME	CURRICULUM LINKS	7	8	9	10	11	12
Facilitated Workshops - Connection to Country	Managing Country	Aboriginal and Torres Strait Islander Histories and Cultures   Geography	✓	✓	✓			
	Debating Ancient History	Aboriginal and Torres Strait Islander Histories and Cultures   History	✓	✓	✓	✓	✓	✓
	Investigating Rights and Freedoms	Aboriginal and Torres Strait Islander Histories and Cultures				✓	✓	✓
Facilitated Workshops - Sustainability, climate change and the natural world	Analysing the Evidence: Impacts on Urban Wildlife	Science	✓					
	Taxonomy: Skills for Organising a Complex World	Science	✓					
	War in WA: Stories from the Homefront	History			✓	✓		
Facilitated Workshops - Innovation and Entrepreneurship	Creative Entrepreneurs	Economics and Business	✓	✓	✓	✓		
Temporary Exhibitions & Special Events	Wonderland	Media Arts   English	✓	✓	✓	✓	✓	✓
	Perth Design Week	Design & Technology	✓	✓				
	Wild About Babies	Design   Technology	✓	✓	✓	✓	✓	✓
	Discovering Ancient Egypt	History   Ethical and Intercultural Understanding	✓	✓	✓	✓	✓	✓
	Debating Ancient History: Egypt	Humanities and Social Sciences HASS   History	✓	✓	✓	✓	✓	✓
	National Science Week	Science	✓	✓	✓	✓	✓	✓
	Bush Mechanics & Cleverman	Aboriginal and Torres Strait Islander Histories and Cultures   Science	✓	✓	✓	✓	✓	✓
Self Guided Experiences	Diversity	HASS   Science	✓	✓				
	Movement and Change	HASS   Science	✓	✓	✓	✓		
	Codebreakers	Problem Solving   Teamwork	✓	✓	✓			
	Gogo Digital Guide	Digital Technologies			✓	✓	✓	✓
Virtual Labs	On the Homefront	Humanities and Social Sciences   History			✓	✓		



# Join us for school holiday fun!

**We have a number of exciting programs and activities during school holidays, including:**

## **Drop & leave workshops**

Full or half day workshops such as Minecraft, stop motion animation and squid dissection that enable juniors to experience the Museum independently.

## **Free activities**

Drop in story time and hands on activities for the whole family to enjoy.

## **Codebreakers**

Part scavenger hunt, part escape room — a self guided mission for mixed-age groups.

## **Tours**

Join one of our popular tours for an introduction to WA Museum Boola Bardip.

## **BOOK ONLINE**

[visit.museum.wa.gov.au/boolabardip/school-holidays](https://visit.museum.wa.gov.au/boolabardip/school-holidays)





**WA MUSEUM  
BOOLA  
BARDIP**

**OPEN DAILY**  
**9.30AM – 5PM**

Early opening by prior arrangement.

📍 **Perth Cultural Centre, Perth WA 6000**

☎ **1300 134 081**

✉ **reception@museum.wa.gov.au**

📱 **@wamuseum**

**[museum.wa.gov.au/boolabardip](https://museum.wa.gov.au/boolabardip)**